

FREE CARON CROCHET FLORAL MOTIF TEE PATTERN



MATERIALS

Caron® Colorama Bamboo Blend™ (8 oz/227 g; 396 yds/363 m)

Sizes	XS/S/M	L/XL	2/5XL	
Contrast A Blush (82001)	1	2	2	ball(s)
	375/340	495/450	560/510	yds/m
Contrast B Linen (82002)	1	2	2	ball(s)
	425/385	550/500	640/580	yds/m
Contrast C Clear Sky (82008)	1	1	1	ball
	160/145	210/190	245/220	yds/m
Contrast D Dry Grass (82003)	1	1	1	ball
	170/155	215/195	250/225	yds/m

Size U.S. 7 (4.5 mm) Susan Bates® Silvalume® crochet hook or size needed to obtain gauge. Susan Bates® yarn needle.



CROCHET | SKILL LEVEL: INTERMEDIATE

ABBREVIATIONS

Approx = Approximately

Beg = Beginning

Ch = Chain(s)

Cont = Continue(it)y

Dc = Double crochet

Pat = Pattern

Rem = Remaining

Rep = Repeat

Rnd(s) = Round(s)

RS = Right side

Sc = Single crochet

Sc2tog = Draw up a loop in each of next 2 stitches or spaces. Yoh and draw through all 3 loops on hook

Sl st = Slip stitch

Sp(s) = Space(s)

St(s) = Stitch(es)

WS = Wrong side

Yoh = Yarn over hook

SIZES

To fit chest measurement

XS/S/M 28-38" [71-96.5 cm]

L/XL 40-46" [101.5-117 cm]

2/5XL 48-62" [122-157.5 cm]

Finished chest

XS/S/M 42" [106.5 cm]

L/XL 48" [122 cm]

2/5XL 54" [137 cm]

GAUGES

15 sc and 17 rows = 4" [10 cm]

Motif = Approx 3" [7.5 cm] wide from side to side.

INSTRUCTIONS

The instructions are written for size **XS/S/M**. If changes are necessary for larger sizes the instructions will be written **XS/S/M (L/XL-2/5XL)**. Numbers for each size are shown in the same color throughout the pattern. When only one number is given in black, it applies to all sizes.

Basic Motif

See diagram on page 5.

**With Color 1, ch 6. Join with sl st to first ch to form a ring.

1st rnd: Ch 3 (counts as dc). 17 dc in ring. Join with sl st to first dc. 18 dc.



2nd rnd: Ch 6 (counts as dc and ch 3). 1 dc in same sp as sl st. *Ch 1. Skip next 2 dc. (1 dc. Ch 3. 1 dc) in next dc. Rep from * 4 times more. Ch 1. Skip last 2 dc. Join with sl st to 3rd ch of ch-6. Fasten off.**

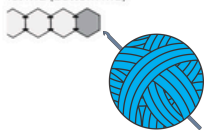
3rd rnd: Join Color 2 with sl st to any ch-3 sp. Ch 3. (2 dc. Ch 2. 3 dc) in same sp as sl st. *(3 dc. Ch 2. 3 dc) in next ch-3 sp. Rep from * 4 times more. Ch 1. Join with sl st to first dc. Fasten off.

Joining 2 Motifs

Work from ** to ** as given for Basic Motif.

3rd rnd: Join Color 2 with sl st to any ch-3 sp. Ch 3. (2 dc. Ch 1. Sl st in corresponding ch-2 sp of adjoining Motif. 3 dc) in same sp as sl st. (3 dc. Ch 1. Sl st in corresponding ch-2 sp of adjoining Motif. 3 dc) in next ch-3 sp. *(3 dc. Ch 2. 3 dc) in next ch-3 sp. Rep from * 3 times more. Ch 1. Join with sl st to first dc. Fasten off.

Joining 2 motifs into 1st rnd (bottom rnd)



Joining last Motif to form bottom ring of Body

Work from ** to ** as given for Basic Motif.

3rd rnd: Join Color 2 with sl st to any ch-3 sp. Ch 3. (2 dc. Ch 1. Sl st in corresponding ch-2 sp of adjoining Motif. 3 dc) in same sp as sl st. *(3 dc. Ch 1. Sl st in corresponding ch-2 sp of adjoining Motif. 3 dc) in next ch-3 sp.** (3 dc. Ch 2. 3 dc) in next ch-3 sp. Rep from ** to ** twice more. (3 dc. Ch 2. 3 dc) in last ch-3 sp. Ch 1. Join with sl st to first dc. Fasten off.

Joining 3 Motifs (first Motif of next ring/row of Body)

Work from ** to ** as given for Basic Motif.

3rd rnd: Join Color 2 with sl st to any ch-3 sp. Ch 3. (2 dc. Ch 1. Sl st in corresponding ch-2 sp of adjoining Motif. 3 dc) in same sp as sl st. (3 dc. Ch 1. Sl st in corresponding sp of adjoining 2 Motifs. 3 dc) in next ch-3 sp. (3 dc. Ch 1. Sl st in corresponding ch-2 sp of adjoining Motif. 3 dc) in next ch-3 sp of next Motif. *(3 dc. Ch 2. 3 dc) in next ch-3 sp. Rep from * twice more. Ch 1. Join with sl st to first dc. Fasten off.

Joining 3 motifs



Joining 4 Motifs (following Motifs of next ring/row of Body)

Work from ** to ** as given for Basic Motif.

3rd rnd: Join Color 2 with sl st to any ch-3 sp. Ch 3. (2 dc. Ch 1. Sl st in corresponding ch-2 sp of adjoining Motif. 3 dc) in same sp as sl st. [(3 dc. Ch 1. Sl st in corresponding sp of adjoining 2 Motifs. 3 dc) in next ch-3 sp] twice. (3 dc. Ch 1. Sl st in corresponding ch-2 sp of adjoining Motif. 3 dc) in next ch-3 sp of next Motif. *(3 dc. Ch 2. 3 dc) in next ch-3 sp. Rep from * once more. Ch 1. Join with sl st to first dc. Fasten off.

Joining 4 motifs



Joining 5 Motifs (last Motif of next ring of Body)

Work from ** to ** as given for Basic Motif.

3rd rnd: Join Color 2 with sl st to any ch-3 sp. Ch 3. (2 dc. Ch 1. Sl st in corresponding ch-2 sp of adjoining Motif. 3 dc) in same sp as sl st. [(3 dc. Ch 1. Sl st in corresponding sp of adjoining 2 Motifs. 3 dc) in next ch-3 sp] 3 times. (3 dc. Ch 1. Sl st in corresponding ch-2 sp of adjoining

Motif. 3 dc) in next ch-3 sp of next Motif. (3 dc. Ch 2. 3 dc) in next ch-3 sp. Ch 1. Join with sl st to first dc. Fasten off.

Joining 5 motifs



Half Motif

***With Color 1, ch 4. Join with sl st to first ch to form a ring.

1st row: (RS). Ch 3 (counts as dc). 9 dc in ring. Join with sl st to first dc. Turn. 10 dc.

2nd row: Ch 5 (counts as dc and ch 2). 1 dc in first dc. *Ch 1. Skip next 2 dc. (1 dc. Ch 3. 1 dc) in next dc. Rep from * once more. Ch 1. Skip next 2 dc. (1 dc. Ch 2. 1 dc) in next dc. Fasten off.***

3rd row: (RS). Join Color 2 with sl st to first dc. Ch 3. 2 dc in next ch-2 sp. *(3 dc. Ch 2. 3 dc) in next ch-3 sp. Rep from * once more. 2 dc in last ch-2 sp. 1 dc in last dc. Fasten off.



Joining 2 sides of Left Half Motif

Work from *** to *** as given for Half Motif.

3rd row: (RS). Join Color 2 with sl st to 3rd ch of ch-5 sp. Ch 3. Join with sl st to corresponding ch-2 sp of adjoining Motif. 2 dc in next ch-2 sp. *(3 dc. Ch 1. Sl st in corresponding ch-2 sp of adjoining Motif. 3 dc) in next ch-3 sp. Rep from * once more. 2 dc in last ch-2 sp. 1 dc in last dc. Fasten off.

Joining 2 sides of left Half Motif



Joining 2 sides of Right Half Motif

Work from *** to *** as given for Half Motif.

3rd row: (RS). Join Color 2 with sl st to 3rd ch of ch-5 sp. Ch 3. 2 dc in next ch-2 sp. *(3 dc. Ch 1. Sl st in corresponding ch-2 sp of adjoining Motif. 3 dc) in next ch-3 sp. Rep from * once more. 2 dc in last ch-2 sp. Join with sl st to corresponding ch-2 sp of adjoining Motif. 1 dc in last dc. Fasten off.

Joining 2 sides of right Half Motif



Joining 3 sides of Half Motif

Work from *** to *** as given for Half Motif.

3rd row: (RS). Join Color 2 with sl st to 3rd ch of ch-5 sp. Ch 3. Join with sl st to corresponding ch-2 sp of adjoining Motif. 2 dc in next ch-2 sp. *(3 dc. Ch 1. Sl st in corresponding ch-2 sp of adjoining Motif. 3 dc) in next ch-3 sp. Rep from * once more. 2 dc in last ch-2 sp. Join with sl st to corresponding ch-2 sp of adjoining Motif. 1 dc in last dc. Fasten off.

Joining 3 sides of Half Motif



Note: Following Diagrams on pages 4, 5 and 6, join Motifs in rounds into Body as you work.

First join Motifs into bottom round, then continue joining Motifs on top of bottom round.

Make **16 (17-24)** Motifs 1 - A as Color 1 and B as Color 2

Make **17 (19-24)** Motifs 2 - C as Color 1 and B as Color 2

Make **17 (20-28)** Motifs 3 - D as Color 1 and B as Color 2

Make **20 (22-24)** Motifs 4 - B as Color 1 and A as Color 2

Make **18 (22-24)** Motifs 5 - C as Color 1 and A as Color 2

Make **18 (20-24)** Motifs 6 - D as Color 1 and A as Color 2

Make **2 (4-4)** Half Motifs - A as Color 1 and B as Color 2

Make **1 (2-4)** Half Motifs - C as Color 1 and B as Color 2

Size XS/S/M only: Make 3 Half Motifs - D as Color 1 and B as Color 2

FINISHING

Neck edging: With RS facing, join B with sl st at center of Motif at right shoulder.

1st rnd: Ch 1. 1 sc in same sp as sl st. Work in sc evenly around neck edge, having 1 sc in each dc and outer ch-2 sp. Work Sc2tog over ch-2 sps at inner Motif joints. Join with sl st to first sc.

2nd and 3rd rnds: Ch 1. 1 sc in each sc around. Join with sl st to first sc. Fasten off at end of 3rd rnd.

Armhole edging: With RS facing, join B with sl st at side seam of armhole.

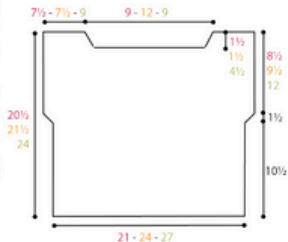
1st rnd: Ch 1. 1 sc in same sp as sl st. Work 87 sc evenly around armhole. Join with sl st to first sc. 88 sc.

2nd and 3rd rnds: Ch 1. 1 sc in each sc around. Join with sl st to first sc. Fasten off at end of 3rd rnd.

Bottom edging: With RS facing, join A with sl st at side seam of body.

1st rnd: Ch 1. 1 sc in same sp as sl st. Work in sc evenly around bottom edge, having 1 sc in each dc and outer ch-2 sp. Work Sc2tog over ch-2 sps at inner Motif joints. Join with sl st to first sc.

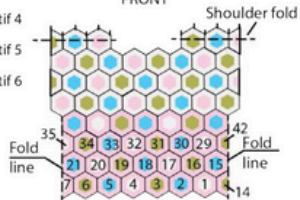
2nd and 3rd rnds: Ch 1. 1 sc in each sc around. Join with sl st to first sc. Fasten off at end of 3rd rnd.



KEY

-  Motif 1
-  Motif 2
-  Motif 3
-  Motif 4
-  Motif 5
-  Motif 6

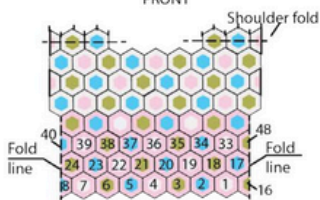
XS/S/M
FRONT



BACK



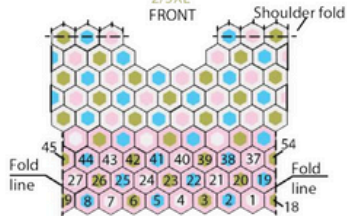
L/XL
FRONT



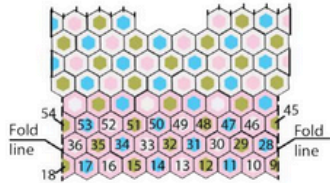
BACK

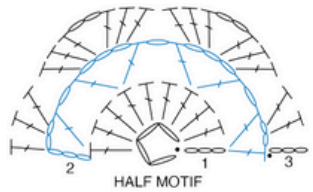
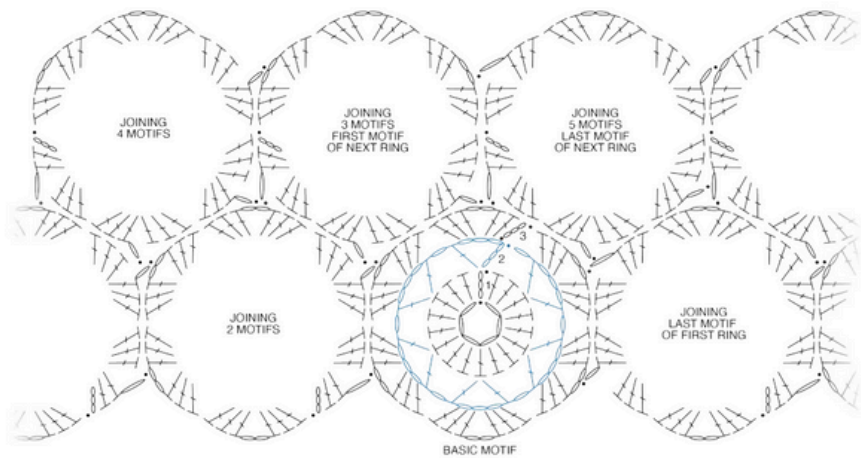


2/SXL
FRONT

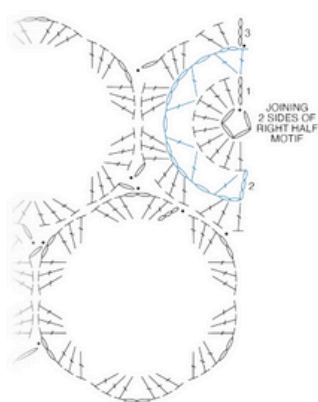
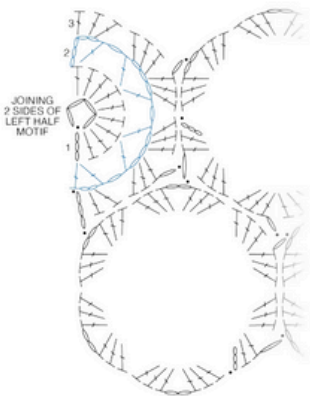


BACK





- STITCH KEY**
- = chain (ch)
 - = slip stitch (sl st)
 - ┌ = double crochet (dc)



STITCH KEY

- = chain (ch)
- = slip stitch (sl st)
- ┆ = double crochet (dc)

Congratulations!

